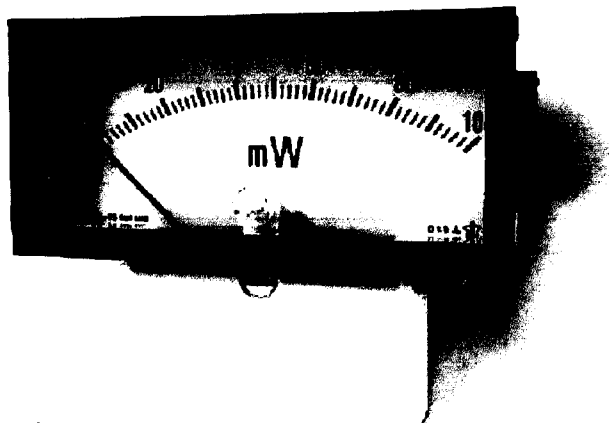


# **KB Series**

- Shock and vibration taut band suspension movement.
- Class 1.5 accuracy , Linearity within  $\pm 1.5\%$ .
- Slide-in interchangeable scale.
- Using the bezel, the meter can be easily mounted from behind the panel.
- Core magnet meter movement minimizes the influence of external magnetic field and steel panel mounting.
- Ranging components externally supplied and easy-to- replace scale plate perm easy range changing.
- This series offers Model KB-75
- Scale plate : Standard KYORITSU Brand, Special OEM Brand.

**Fujiha**



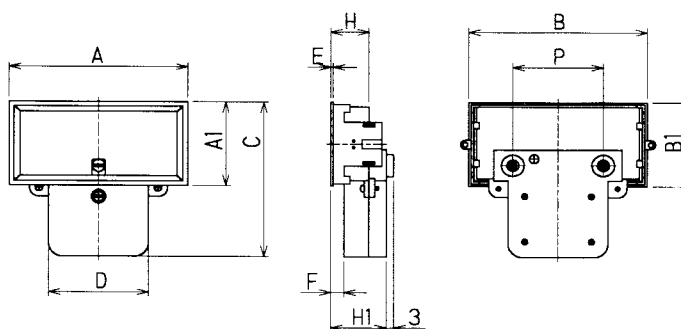
**KB Series**

Photo : KB75

## ◆ Model & Type

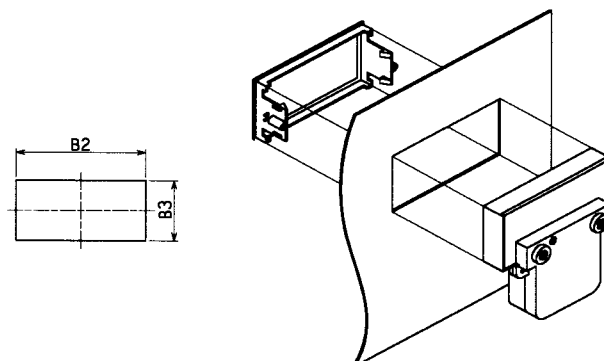
Type		Model Number	Class
DC	Ammeters•Voltsmeters	KB-75	1.5
AC	Ammeters•Voltsmeters	KB-75	1.5

## ◆ Dimensions (mm)



Model	A	A1	B	B1	C	D	E	F	H	H1	B2	B3	P
KB-75	75	38	73	36	70	42	1	5.5	16.5	24	73.5	36.5	38

## ◆ Mounting Dimensions



## ◆ General Descriptions

	KB-75
Bezel	Polyacetal resin. Black.
Front Cover	Transparent acrylic resin.
Case	ABS resin. White.
Scale Plate	Black numerals & division lines on white background.
Pointer Shape & Colour	Needle. Black.
Scale Length	58mm
Pointer Deflection Angle	90°
Direction of Pointer Deflection	Clockwise counter-clockwise
Linearity	±1.5%
Standard Mounting Position	Vertical
Zero Adjuster	Surface mounted.
Operating Temperature	0°C~40°C
Storage Temperature	-10°C~+50°C
Damping Time	Within 3 seconds
Overshoot	Within 30%

## ◆ DC Ammeters

F.S. Value	Approx. Internal Resistance
	KB-75
100 $\mu$ A	1,870 $\Omega$
200 $\mu$ A	940 $\Omega$
500 $\mu$ A	420 $\Omega$
1mA	210 $\Omega$
5mA	5.8 $\Omega$
500mA	Voltage Drop 100mV
1A	
2A	

★ For ranges higher than 2A KB-75 will be supplied with external block shunt.

## ◆ DC Voltmeters

F.S. Value	Approx. Current Consumption
10V	1mA
30V	
50V	
100V	
150V	
300V	

★ For ranges higher than 300V meters will be supplied with external multiplier.

## ◆ AC Voltmeters (Rectifier Type)

F.S. Value	Approx. Current Consumption
30V	1mA
50V	
100V	
150V	
300V	

★ For ranges higher than 300V KB-75 meters will be supplied with external multiplier.  
★ Calibrated on sinusoidal waveform.