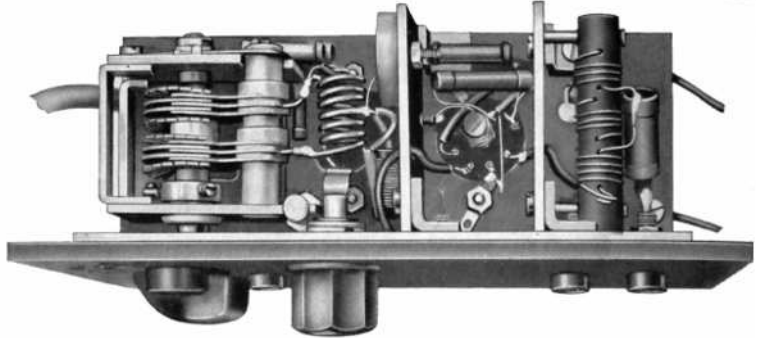
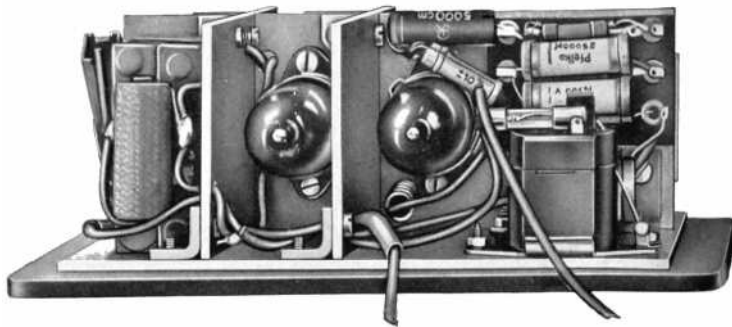
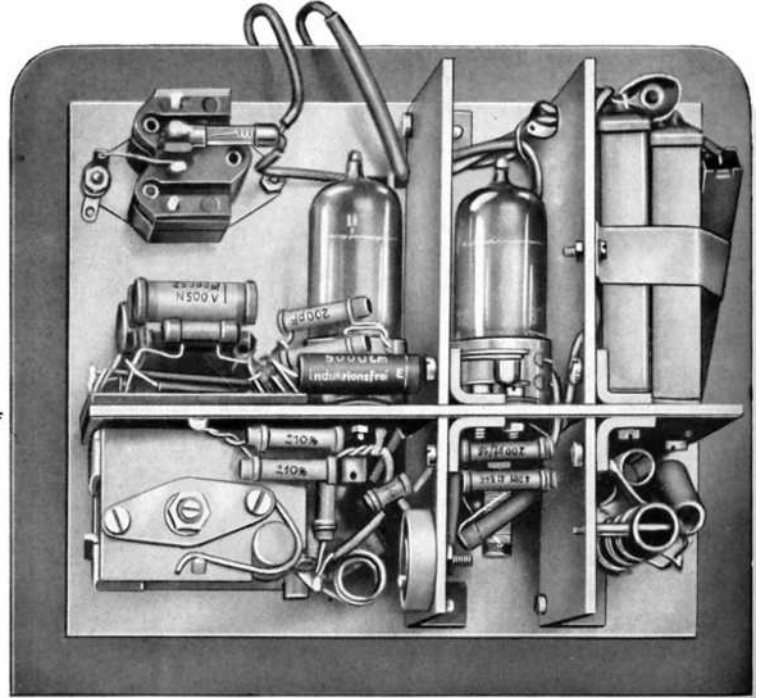
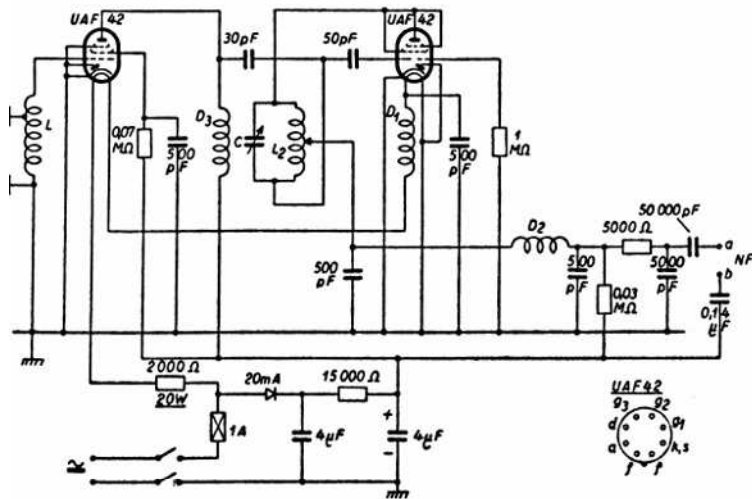
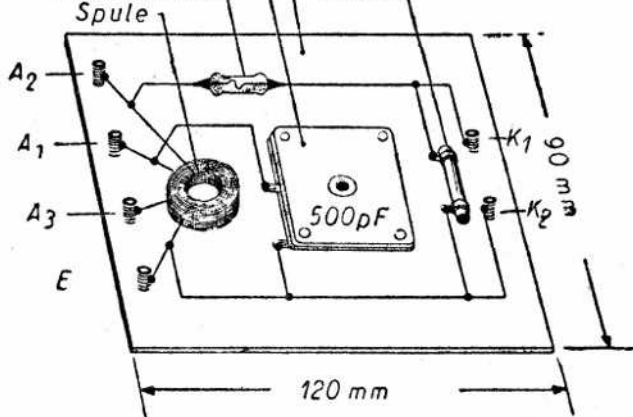


# Superreakční adaptér pro příjem VKV (asi 1958)

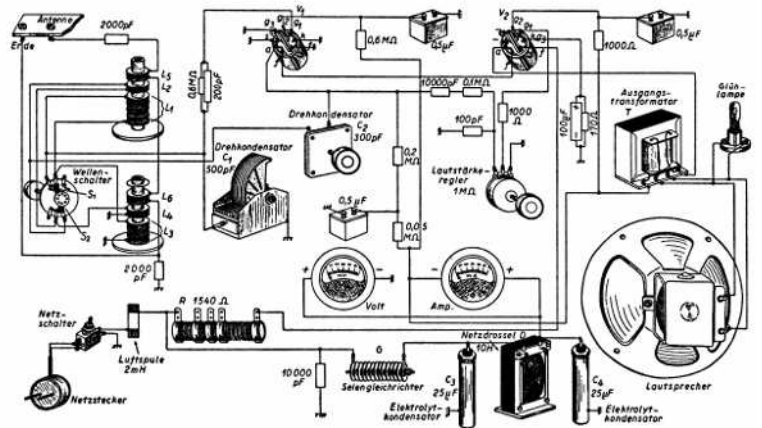


## Krystalka na víku krabice od doutníků

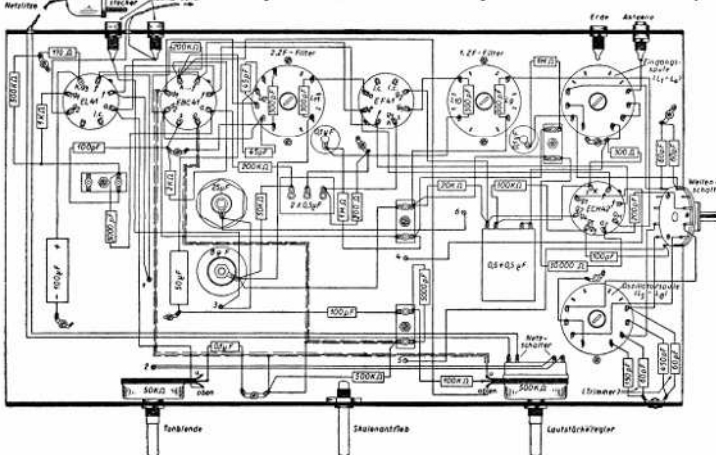
Drehkondensator  
Kristalldiode  
Spule  
Deckel der Zigarrenkiste  
2000 pF



## (1955) Zpětnovazební jednookruhový audion



## Superhet, osazovací plán



## (1955)

## stejný superhet bez lamp, 3D

